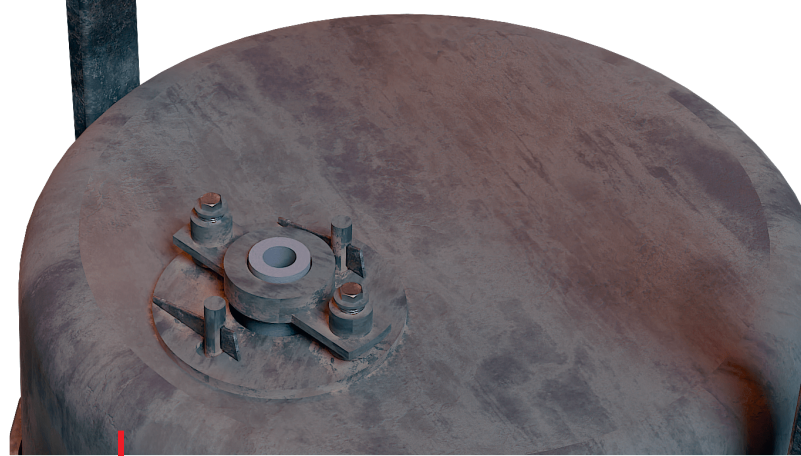


Benefits

of the new system

- + quick change of the pouring nozzle
- + faster ladle set up
- + suitable for multiple use
- + less refractory work



Do you have further questions regarding the VAPEX FOSFLOW NOZZLE system?
Please contact us.

Foseco International Limited,
Drayton Manor Business Park, Tamworth, Staffordshire
England B78 3TL,
Phone: +44 (0) 1827 262021
Fax: +44 (0) 1827 283725
www.foseco.com

VAPEX FOSFLOW NOZZLE SYSTEM

Quick interchangeable Nozzles for Steel Foundry Applications

VAPEX FOSFLOW Nozzle System

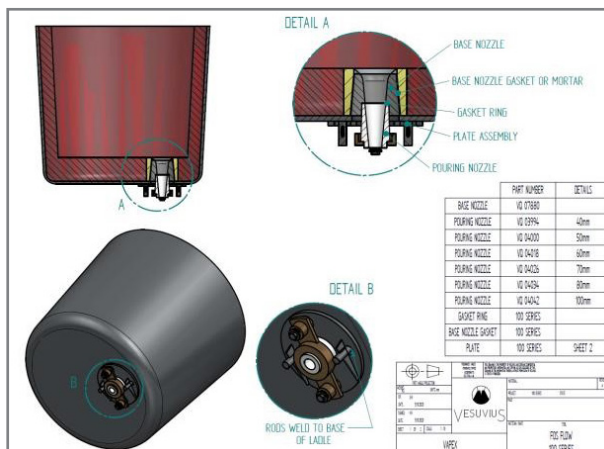
VAPEX FOSFLOW alumina graphite nozzles use both carbon and ceramic bond technology. The combination of the two bonding systems provide unique beneficial properties for steel foundry ladle applications.

The system contains a BASE NOZZLE which remains in the refractory bottom of the ladle and an interchangeable POURING NOZZLE with possible different inner diameters. This POURING NOZZLE can be replaced quickly even within a ladle cycle.

FOSECO provides 4 different VAPEX FOSFLOW series , 45, 65, 100 and 100 extended for large ladles.

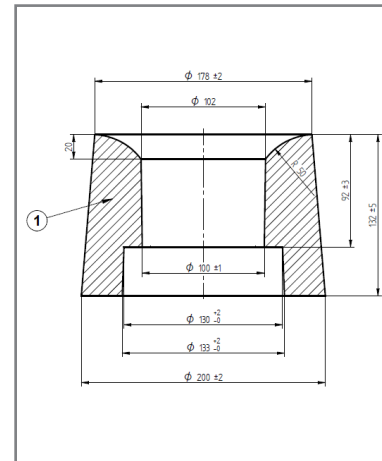
For using the VAPEX FOSFLOW concept, the ladle bottom needs to have a different fixing system (see illustration). FOSECO can provide all necessary metal parts which makes it easy to modify the stopper ladle bottom.

VAPEX FOSFLOW nozzles should be used in conjunction with VISO monoblock stopper technology that allow a multi-use of the stopper, too. Ladle lining and flow control equipment should be pre-heated following the VISO pre-heating schedule available on request.



THE TYPES

> Typical Base Nozzle



> Typical Pouring Nozzle

